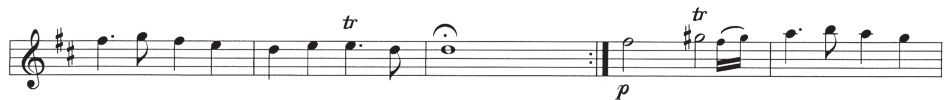


Solo Trompete in C

# Suite in D-Dur

von Jeremiah Clarke  
bearb. Adi Rinner

## 1. Satz RONDEAU

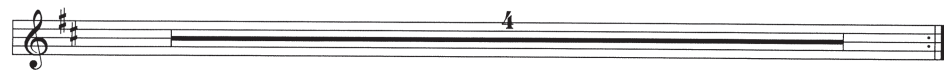


Solo Trompete in C

## 2. Satz MENUETT



## 3. Satz BOURREE



Solo Trompete in C

4. Satz ECOSSAISE

Musical notation for the first staff of '4. Satz ECOSSAISE'. It features a treble clef, a key signature of one sharp (F#), and a common time signature (C). The music begins with a four-measure rest, followed by a series of eighth and sixteenth notes. A dynamic marking of *p* is placed below the first note. The staff concludes with a double bar line and repeat dots.



Musical notation for the second staff of '4. Satz ECOSSAISE'. It continues the melody with eighth and sixteenth notes. A dynamic marking of *p* is present. A second ending bracket with the number '2' spans the final two measures, which end with a double bar line and repeat dots.

Musical notation for the third staff of '4. Satz ECOSSAISE'. The melody continues with eighth and sixteenth notes. A dynamic marking of *mf* is placed below the staff. The staff ends with a double bar line and repeat dots.

5. Satz GIGUE

Musical notation for the first staff of '5. Satz GIGUE'. It features a treble clef, a key signature of one sharp (F#), and a 6/4 time signature. The music starts with a series of eighth notes. Dynamic markings of *mf-f* and *p* are present. A trill (*tr*) is indicated above the final note of the first phrase. The staff ends with a double bar line and repeat dots.

Musical notation for the second staff of '5. Satz GIGUE'. The melody continues with eighth and sixteenth notes. The staff ends with a double bar line and repeat dots.

Musical notation for the third staff of '5. Satz GIGUE'. The melody continues with eighth and sixteenth notes. A dynamic marking of *f-p* is present. A trill (*tr*) is indicated above the final note of the first phrase. The staff ends with a double bar line and repeat dots.



Musical notation for the fourth staff of '5. Satz GIGUE'. The melody continues with eighth and sixteenth notes. It includes first and second endings, both marked with a trill (*tr*). The first ending leads back to the beginning of the piece, while the second ending concludes with a fermata. The staff ends with a double bar line and repeat dots.



Solo Trompete in B

# Suite in D-Dur

von Jeremiah Clarke  
bearb. Adi Rinner

## 1. Satz RONDEAU

*sf-f*



*p*

*f*

*f*

*f*

*f*

*f*

Solo Trompete in B

## 2. Satz MENUETT

*mf-p*

*mf-p*

*mf-p*  
attacca



## 3. Satz BOURREE

*f*

4

*mf*

*f*



Solo Trompete in B

### 4. Satz ECOSSAISE

Musical notation for the first staff of '4. Satz ECOSSAISE'. It features a treble clef, a key signature of three sharps (F#, C#, G#), and a common time signature (C). The music begins with a four-measure rest, followed by a series of eighth and sixteenth notes. A dynamic marking of *p* (piano) is placed below the first note. The staff concludes with a double bar line and repeat dots.



Musical notation for the second staff of '4. Satz ECOSSAISE'. It continues the melodic line with eighth and sixteenth notes. A dynamic marking of *p* is present. The staff ends with a double bar line and repeat dots.

Musical notation for the third staff of '4. Satz ECOSSAISE'. The melody continues with eighth and sixteenth notes. A dynamic marking of *mf* (mezzo-forte) is shown. The staff concludes with a double bar line and repeat dots.

### 5. Satz GIGUE

Musical notation for the first staff of '5. Satz GIGUE'. It features a treble clef, a key signature of three sharps, and a 3/4 time signature. The music starts with a series of eighth notes. A dynamic marking of *mf-f* (mezzo-forte to forte) is placed below the first note. The staff ends with a double bar line and repeat dots.

Musical notation for the second staff of '5. Satz GIGUE'. The melody continues with eighth notes. The staff ends with a double bar line and repeat dots.

Musical notation for the third staff of '5. Satz GIGUE'. The melody continues with eighth notes. A dynamic marking of *f-p* (forte to piano) is shown. The staff ends with a double bar line and repeat dots.



Musical notation for the fourth staff of '5. Satz GIGUE'. It features first and second endings. The first ending is marked with '1. tr' and the second with '2. tr'. The staff concludes with a double bar line and repeat dots.



Solo Trompete in D

# Suite in D-Dur

von Jeremiah Clarke  
bearb. Adi Rinner

## 1. Satz RONDEAU††

Musical notation for the first staff of '1. Satz RONDEAU'. It features a treble clef, a common time signature (C), and a dynamic marking of *f-p*. The notation includes a trill (*tr*) over a dotted quarter note.



Musical notation for the second staff of '1. Satz RONDEAU'. It includes a trill (*tr*) over a dotted quarter note and a dynamic marking of *p*.

Musical notation for the third staff of '1. Satz RONDEAU'. It includes a trill (*tr*) over a dotted quarter note.

Musical notation for the fourth staff of '1. Satz RONDEAU'. It includes a trill (*tr*) over a dotted quarter note.

Musical notation for the fifth staff of '1. Satz RONDEAU'. It includes a trill (*tr*) over a dotted quarter note and a fermata over a whole note, with the number '8' written below the staff.

Musical notation for the sixth staff of '1. Satz RONDEAU'. It includes a trill (*tr*) over a dotted quarter note and a dynamic marking of *f*. The Tirol Musikverlag logo is overlaid on the staff.

Musical notation for the seventh staff of '1. Satz RONDEAU'. It includes a trill (*tr*) over a dotted quarter note and a fermata over a whole note.

Solo Trompete in D

## 2. Satz MENUETT

Musical notation for the first staff of '2. Satz MENUETT'. It features a treble clef, a 3/4 time signature, and a dynamic marking of *mf-p*.

Musical notation for the second staff of '2. Satz MENUETT'. It includes a dynamic marking of *mf* and a fermata over a whole note.

Musical notation for the third staff of '2. Satz MENUETT'. It includes a dynamic marking of *mf* and the instruction 'attacca' at the end of the staff. The Tirol Musikverlag logo is overlaid on the staff.

## 3. Satz BOURREE

Musical notation for the first staff of '3. Satz BOURREE'. It features a treble clef, a common time signature (C), and a dynamic marking of *f*. The notation includes a trill (*tr*) over a dotted quarter note.

Musical notation for the second staff of '3. Satz BOURREE'. It features a treble clef, a common time signature (C), and a fermata over a whole note with the number '4' written below the staff.

Musical notation for the third staff of '3. Satz BOURREE'. It includes a dynamic marking of *mf*.

Musical notation for the fourth staff of '3. Satz BOURREE'. It includes a dynamic marking of *f* and a trill (*tr*) over a dotted quarter note. The Tirol Musikverlag logo is overlaid on the staff.

Solo Trompete in D

4. Satz ECOSSAISE

Musical notation for the first staff of '4. Satz ECOSSAISE'. It begins with a treble clef, a common time signature, and a 4-measure rest. The first note is a quarter note G4, followed by eighth notes A4, B4, and C5. The dynamic marking *p* is placed below the first note. The staff ends with a double bar line and repeat dots.



Musical notation for the second staff of '4. Satz ECOSSAISE'. It starts with a treble clef, a common time signature, and a repeat sign. The first note is a quarter note G4, followed by eighth notes A4, B4, and C5. The dynamic marking *p* is below the first note. The staff continues with a half note G4, a 2-measure rest, and then eighth notes A4, B4, and C5. It ends with a double bar line and repeat dots.

Musical notation for the third staff of '4. Satz ECOSSAISE'. It starts with a treble clef, a common time signature, and a quarter note G4. The dynamic marking *mf* is below the first note. The staff continues with eighth notes A4, B4, and C5, followed by a 2-measure rest, and then eighth notes A4, B4, and C5. It ends with a double bar line and repeat dots.

5. Satz GIGUE

Musical notation for the first staff of '5. Satz GIGUE'. It begins with a treble clef, a 6/8 time signature, and a quarter note G4. The dynamic marking *mf-f* is below the first note. The staff continues with eighth notes A4, B4, and C5, followed by a quarter note G4. The dynamic marking *p* is below the final note. The staff ends with a double bar line and repeat dots.

Musical notation for the second staff of '5. Satz GIGUE'. It starts with a treble clef, a 6/8 time signature, and a quarter note G4. The staff continues with eighth notes A4, B4, and C5, followed by a quarter note G4. The staff ends with a double bar line and repeat dots.

Musical notation for the third staff of '5. Satz GIGUE'. It starts with a treble clef, a 6/8 time signature, and a quarter note G4. The dynamic marking *f-p* is below the first note. The staff continues with eighth notes A4, B4, and C5, followed by a quarter note G4. The dynamic marking *tr* is above the final note. The staff ends with a double bar line and repeat dots.



Musical notation for the fourth staff of '5. Satz GIGUE'. It starts with a treble clef, a 6/8 time signature, and a quarter note G4. The staff continues with eighth notes A4, B4, and C5, followed by a quarter note G4. The dynamic marking *tr* is above the final note. The staff ends with a double bar line and repeat dots.

